

ប័ណ្ណទទួល	
DOCUMENT RECEIVED / DOCUMENT REÇU	
ថ្ងៃ ខែ ឆ្នាំ (Date of receipt / date de réception):	
25-Feb-2010, 13:25	
ឈ្មោះ (Time/Hours): Chanthan Phok	

ប្រជាជន កម្ពុជា
គ្រប់គ្រង ប្រទេស
កម្ពុជា

ប្រជាជន កម្ពុជា គ្រប់គ្រង ប្រទេស

REVOLUTIONARY FLAG
SPECIAL ISSUE APRIL 1977

SPECIAL ISSUE

CONGRATULATIONS ON THE

SECOND ANNIVERSARY

OF THE MARVELOUS

GREAT 17 APRIL 1975 VICTORY

AND THE BIRTH OF

DEMOCRATIC KAMPUCHEA!

**Continue to Strengthen and Expand the Great Victories
of Early 1977 to Become Even Mightier
In Order to Sweep the Enemy Clean and Continue to
Completely Implement and Even Surpass
The Party's 1977 Plan**



On the occasion of the meeting to recognize the second anniversary of the marvelous great 17 April 1975 victory and the birth of Democratic Kampuchea, the Comrade Party Representative gave a presentation on the situation of the Kampuchean revolution and the results of the implementation of the political mission of the Party during the past year (17 April 1976 through 17 April 1977) and in particular the results of the implementation of the 1977 political mission during the recent first three months of the year, including the positives and the negatives and the future directions for resolution in every field of work. We wish to present excerpts and summaries of that presentation as follows:

**I. Assessing the Results of the Implementation
Of the Party's 1977 Political Mission
During the Past Three Months
(January, February, March)**

On the results of the implementation of the 1977 political mission during the past three months, we clearly see the positives and the negatives along with the future directions for resolution in every field of world, in particular the overall political mission and the 1977 core mission.

1. Views on the overall results

During the past three months, tallying the positives and the negatives, tallying the easy and the difficult, tallying the progress and the impeding obstacles of every type, we clearly see that during the past three months our Communist Party of Kampuchea overcame many obstacles to lead our collective worker-peasants and our Revolutionary Army in seizing initial victories during 1977 in terms of defending the country, defending the worker-peasant revolutionary state power, defending the collective regime and the new socialist regime completely in terms of both continuing socialist revolution to a profound new level and building socialism in every field, especially strengthening and expanding the collective position to a new level and creating many additional

preconditions to pioneer forward on the offensive to achieve the Party's three and six tons for 1977 along with successfully building, purging, strengthening, and expanding Party leadership at every echelon. Thus, the view toward the victories in every field during the past few months is that they were profound and audacious and underwent strenuous, tense combat between us and the enemies both internal and external, between the revolution and the traitors to the revolution both internal and external, between the collective and the private, between socialism and capitalism, between the Kampuchean revolution under the correct leadership of the Communist Party of Kampuchea on one side and the "CIA", the KGB", and the "Y[uon]" and their running dogs on the other.

Through strenuous, tense, and profound testing during the past three months, we clearly see that the Kampuchean revolution was absolutely victorious over all enemies and this has caused the situation of the revolution to absolutely have the advantage over the enemy in a situation of increasing mastery and in the position of going on increasingly mighty offensives against the enemy. As for the enemy, they have received serious blows of defeat during these past three months. The external enemies, the "CIA", the "KGB", and the "Y[uon]" have received extremely humiliating and serious defeats in their wars of espionage against Kampuchea during the past 27 years, and now they are in a state of loss of mastery, loss of mastery in the sense that they have fundamentally run out of traitor forces inside our country and this has made them incapable of carrying out their criminal activities to attempt to overthrow the Kampuchean revolution, the Communist Party of Kampuchea, the Kampuchean people, the Revolutionary Army of Kampuchea, and Democratic Kampuchea. They have lost mastery in another sense too: they cannot attack us from the outside.

These enemies of all types strive to build espionage forces: all three of their major networks that have embedded and bored holes from within the Party, the revolution, and our Army during the past 27 years were discovered by us and were fundamentally smashed during the first trimester of 1977. This was not a normal victory; it was a huge victory for us and a hugely serious defeat for the enemy. This is another huge, historic victory for the Party, the revolution, the Army, and our people over the enemy after 17 April 1975.

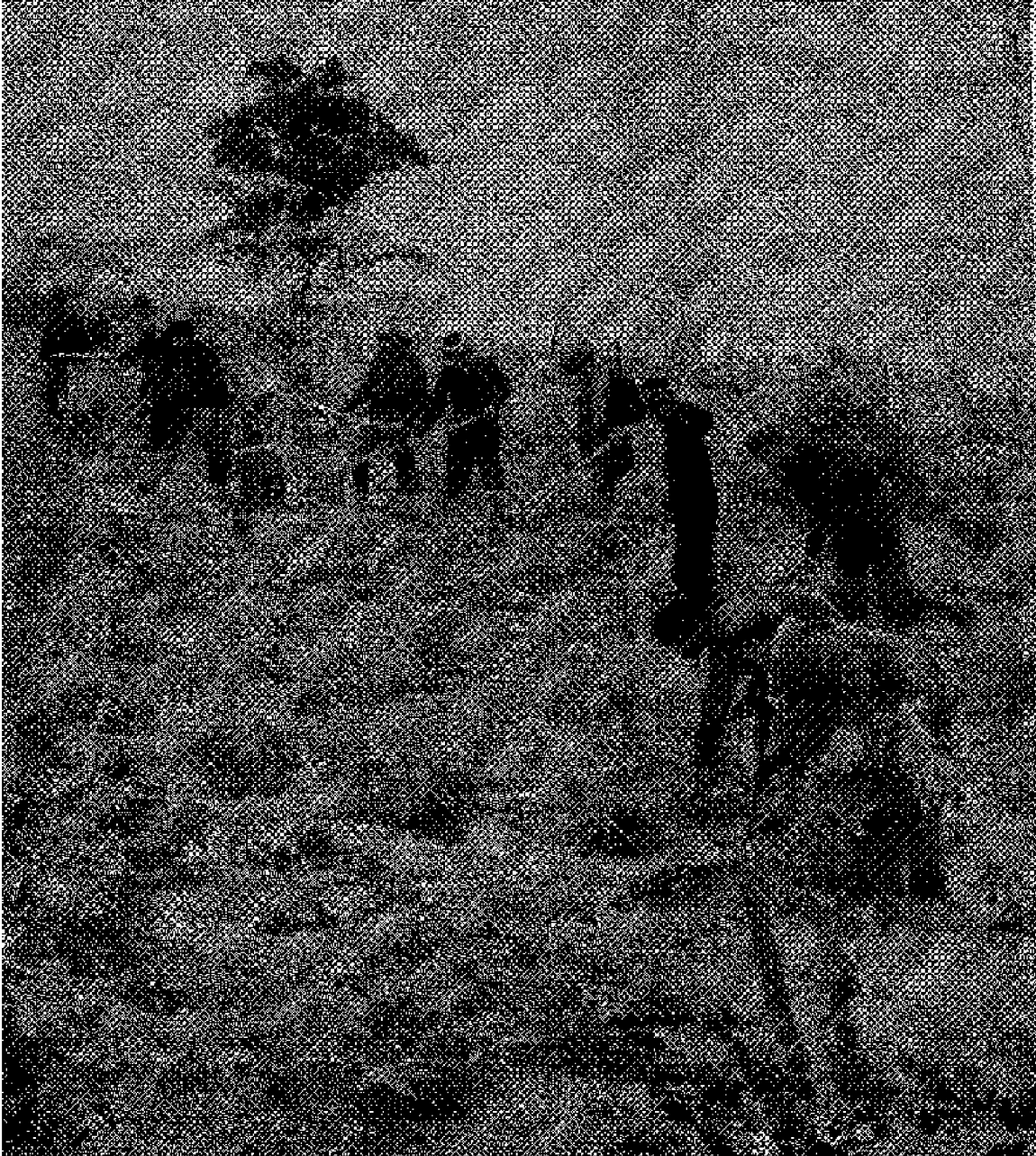
Based upon this situation, what stances must we take and what further measures must we take? Should we continue attacking the enemy, or should we stop for a while in joy over our victory? We absolutely must continue to attack the enemy and not let them be able to commit aggression, interfere, and commit sabotage against us. Strike them from a position of mastery, from a position of offense, following the domestic and foreign policy lines and the military line of the Party, in meticulous order. We must not be joyful, careless, or forgetful because of our victory over the enemy this time. To the contrary, we must be more courteous, calm, and meticulous with a high spirit of revolutionary vigilance times and continue to attack and eradicate these external enemies on every battlefield in every firm. When we operate meticulously like this, we will absolutely further strengthen and expand our past victories and the enemy absolutely will be defeated again and again.

As for the enemies that are “CIA”, “KGB”, and “Y[uon]” agents, the cheap running dogs of the enemy that sneakily embedded inside our revolution and our revolutionary ranks, they are in a state of extreme loss of mastery because their major and intermediate apparatuses have fundamentally been smashed and the forces that remain have been fundamentally scattered, like rats being hit and falling from their nests into the water and being chased and struck by the people and annihilated. We must continue to strike them and trample them from our position of absolute advantage and must constantly be on the offensive against them during 1977 to smash them even more so they cannot raise their heads. By doing this, we will create the preconditions for us to attack the enemy even stronger during 1978, and in future years and we will achieve additional major victories.

2. Clarification

a. It is imperative to see that our position is absolutely stronger than the enemy’s; we are strong, have a high level of mastery, and are constantly on the offensive against the enemy.

b. It is imperative to take up the role of leading the masses in the Party, in the Army, in the worker-peasant people, and in the ministries and offices to continue on the offensive to sweep clean the enemies that are now broken and scattered and continue to bring them to ruination. Do not leave them with any opportunity at all to step back and breathe and hide themselves and then break out of their nests to strengthen and expand their forces.



This group of our Revolutionary Army combatants in the Koh Kong area seize an opportunity to rest in the afternoon from their core work and go down to actively care for potatoes in order to modify the livelihood of their unit.

II. It is Imperative to Implement the 1977 Political Mission Completely And as Well as Possible, Following All 1977 Plan Objectives And Even Surpassing the 1977 Plan Objectives

We must concentrate on and be in complete unity about the imperative to study the experiences of what went right and what went wrong during the past three months together with the many experiences of 1976 in order to go on the offensive with an extremely high-level stance of independence/mastery/self-reliance to achieve the 1977 Plan by 100 percent and set the additional objective of surpassing 100 percent, to do better than 100 percent, whether in the framework of the entire 1977 Plan or in the framework of one battlefield, one spearhead, one unit, or one base area. For example, during these past three months, the salt field units, some rubber units, some canal and dam units, some dry season rice units, some fertilizer units, and some agricultural tool units have already surpassed the 1977 Plan. These units must continue on offensives to seize victories and surpass plans to the maximum in their status as progressive units. In tandem with this, other units in frameworks throughout the country whether Zone, Sector, district, cooperative, military units, ministries, or offices must go on offensives to follow the patterns of the progressive units in order to achieve the entire 1977 Plan and even surpass the plan. **Our objective is to push for there to be many progressive units in frameworks throughout the country, in the Zone frameworks, in each Sector framework, in each district framework, in each cooperative, in each base area framework, military unit, ministry, and office.**

In order to accomplish this goal, it is imperative to:

1. Whip up the mass movement to implement the mission in each individual field to a mighty and constant froth.
2. Have the Party take the role of leading the masses on audacious offensives without hesitation, without pulling back, without indecision, to overcome every obstacle and pioneer forward to reach the goals of the Party's 1977 Plan.

Whenever the Party leads the masses in making a great movement go on the offensive like this, no matter what the obstacles are, no matter who the enemy is, they cannot hold back the progress of the great revolutionary movement of the masses. The great revolutionary movement of the masses tramples and crushes to bits any obstacle or enemy that impedes its path.

As for the issue of the manpower of the people, it is imperative to whip up all the manpower of the people to concentrate on using the worker-peasant alliance as a concrete support, meaning the poor peasants and the lower-middle peasants act as the fundamental forces and the core forces with the correct, audacious, and mighty Party Organization in the lead.

As for Party issues, it is imperative to concentrate on Party organization at every echelon in order to lead the mass movement; however, the most important thing is the Party Center, that is to say every framework throughout the country, the Zone Committees, most importantly in the Zone frameworks. In tandem with this it is imperative that the Sector and district Party Committees be clean and follow the political, ideological, and organizational lines of the Party. When all these echelons of the Party are clean, good, and strong, surely the Party Branches, cooperatives, and unions will be absolutely clean and strong. To the contrary, when these Party echelons have some issues and are not yet clean, not yet strong, the cooperatives and the unions cannot be strong. This is because it is not the people that lead the Party: the Party is responsible for leadership. Our stance on this principle leads us to clean up a number of incorrect views, as follows:

a. It is imperative to take up the leading roles of the Party, of the cadres, and of the important Party leadership committees. Do not wait for the masses. Do not blame the masses. Do not place the responsibility on the masses. We must clearly clean up the view that when the Party is good, the masses are good, the cadres are good, the masses are good, then the Party is strong, the cadres are strong, the revolutionary movement is strong and when the Party is weak, the cadres are weak, the masses are weak, and the revolutionary movement is weak or encounters difficulties and complications again and again.

b. Accordingly, this leads us to once again clarify the leadership role of the Party in the revolutionary movement, the role of the cadres and Party members in leading the revolutionary movement to fulfill missions on each battlefield during each period of time. Seeing this leads us to concentrate on and consider the breath of our revolution, the life of our revolution, meaning to concentrate on building the Party, building cadres, building committees, and building Party membership as being the most important thing; the various other items in terms of technology, economics, the military, culture, social action, and so on are not bigger than the Party. Only when the Party is good, the cadres are good, and the Party members are good can the economy, the military, social affairs, culture, and the various technologies be good and strong.

How must we build the Party, the cadres, the committees, and the Party membership? They must be built in the concrete revolutionary movements of the masses, meaning the movements in politics, the economy, the military, social affairs, culture, and so on where the masses work following the Party line. Based on the revolutionary movements of the masses in every field, we purge, clean up, sweep clean, strengthen, and expand our Party, our cadres, and our committees, in order to be able lead the movements following the tasking of the Party. Therefore, leading the Party, the cadres, the committees, and the Party members is not separate work from the concrete revolutionary movements of the masses. Therefore, Party-building work does not lead to a loss of time for doing other work. This confused view must be eradicated.

Experience is a concrete lesson that shows whether the situation of the revolutionary movements of the masses are strong or weak, good or not good, fast or

complicated; it is a measure to show the true state of the Party, of the committees, and of the cadres. The revolutionary movements of the masses are the fundamental factors in building a good, clean, mighty Party, in the sense that we use the revolutionary movements of the masses on each battlefield to purge, clean up, sweep clean, strengthen, and expand the Party, the cadres, and the committees to make them successively good, clean, and mighty.

1. It is imperative to concentrate on defending the country and defending the Party's worker-peasant state power, to be even more actively combative, and not let the enemies be able to raise their heads

Past experience leads us to better understand and more clearly see that even though the internal and external enemies have been extremely seriously defeated in the past, they have not forsaken their strategies of opposing our correct Kampuchea revolution. They, the "CIA" part, the "KGB" part, and the "Y[uon]" part still strive to struggle free to continue their criminal activities. This is a view that we must be constantly clear on in order to have a high-level spirit of revolutionary vigilance to resist and eradicate the enemy in advance with constant mastery.

Which of all criminal plans of the enemies from every direction might they be able achieve or not achieve in the future, in the short term and in the long term? As for this question, based on our experience, based on all of our subjective and objective favorable conditions, based on all our short-term and long-term measures in every field, we clearly see that we have an absolute advantage over the enemy and will certainly absolutely defeat all the criminal plans of both the external and internal enemies again and again.

At this time, we recall a number of our plans, as follows:

a. It is imperative to have the view that our position is absolutely stronger than the enemy's and is strong in terms of high-level mastery and constant offensives against the enemy.

b. Continue to constantly raise high our spirit of vigilance toward the enemies inside the Party, inside the Army, and among the people.

c. Have a clear view toward both the internal and external enemies and see their true nature; see that they are in life-and-death contradiction; see their activities, their maneuvers and their methods of operations of all types; see from experience that they attack from the outside; they attack from the inside; they attack militarily; they attack politically, psychologically, economically, culturally, educationally, technologically, scientifically, in social affairs, public health, and so on. See this in order to gain mastery in terms of the view of clearly analyzing these phenomena by the category of the contradiction and then taking measures to eradicate them with mastery in a timely manner.

d. It is imperative to indoctrinate and whip-up the masses into a force to seek out the enemy, assess the enemy, analyze the enemy, track the enemy, pressure the enemy, capture the enemy, to smash the enemy, and to make the enemy be like a rat surrounded by a crowd of people beating and smashing it.

e. It is imperative to concentrate on all of the masses, but especially on the poor peasants and the lower-middle level peasants. It is imperative to constantly indoctrinate them so they will be routinely clear-sighted and can be a huge force to attack the enemy, to defend the country, and to continue to make socialist revolution and to build the country to be mighty in every field, and so on.

In tandem with this, we must concentrate on building revolutionary forces to be clean and numerous and mighty to guarantee the pure complexion of our revolution forever.

These forces are:

a. The currently existing forces are the Party, the core organizations, the Army, the unions, the cooperatives, and so on. It is imperative to purge, to clean up, and to sweep clean the no-good elements and the enemy elements by further strengthening and expanding the good elements that successively emerge from the movements.

b. Along with this, it is imperative to make orderly prepare following the correct organizational line of the Party those who will inherit their turn of duty later on by selecting them from among sources of new forces that are of such an age that they were not dirtied during previous periods. Those who carry on in their turns of duty must build following the Party line, not following any unit or any individual other than the Party line. (As for this issue, it is the direct duty of the Party Center to manage and instruct the actual process.)



Our sister combatants in a Siem Reap District Handicrafts Factory resolve to go all out on a production offensive to produce more and produce better quality water jars and crocks to serve the needs of the people in our cooperatives.

Note: One very important issue that has to be concentrated on is clearly unmasking again and again the “CIA” and their agents, the “KGB” and their agents, the territory-swallowing “Y[uon]” and their running dogs throughout the whole Party, throughout the whole Army, and throughout the people and attacking and breaking the enemy politically and preventing them forever from sneaking into our Party, our Army, and our people. As for their old roots, some of whom still remain after we have smashed them to bits, it is imperative to whip-up the people to sweep more of them clean and make things permanently clean.

2. It is imperative to concentrate on continuing to carry out socialist revolution

We must push the mission of continuing to carry out socialist revolution more profoundly inside the Party, inside the Army, and among the people following the core content of our 1977 Plan. We must dare to push and push deeply the implementation of the mission of carrying out socialist revolution at every location at all times. Do not hesitate. Do not shrink back. Do not be indecisive about or abandon socialist revolution. Each location must take the leadership role to push the mission profoundly in order to further seize, expand, and increase the power of socialist revolution so the power of

socialist revolution will trample the enemy and trample the remnants of the various oppressor classes, trample the remnants of the various private ownership regimes and smash them to bits to prevent them from being able to raise their heads, no matter where they are, even if they are at some small location.

It is imperative to further strengthen the view and stance of continuing to carry out socialist revolution well and more profoundly. This further guarantees that the missions of defending the country and defending the Party's worker-peasant state power and the Party's mission to build socialism will be even more excellent and mighty.

3. The mission of going on the offensive to build socialism in every field during 1977

a. We must push the offensive to build socialism in every field as stated in the 1977 Plan of the Party, economically (agriculture, industry, communications, transport, commerce, rubber, salt, and so on), culturally, educationally, in social affairs, in public health, in every aspect of the livelihood of the people, technologically, and so on.

b. We must concentrate on especially pushing **the core mission of three tons and six tons per hectare** by striving to gather physical forces, mental forces, capacity forces, and every kind of material forces to carry out and achieve the Party's three tons and six tons per hectare and strive to surpass that plan, at least in some of the base areas in each Zone and each Sector throughout the country.

In order to achieve this goal, it is imperative to closely grasp a number of factors, as follows:

a. Party leadership:

It is imperative to concentrate on the command committees or the commanders at each location large or small and make them clean and strong to lead both the fight and struggle against the enemy, meaning the class struggle inside those base areas, as well as the struggle to increase production following the Party's plan.

b. The water issue:

It is imperative to achieve and master the successive plans for water construction projects starting in this month of April and to strengthen and expand them to gain further mastery. In tandem with this, it is imperative to have commanders or command committees for water in the frameworks of the Zones, Sectors, districts, or in individual locations to meticulously accept responsibility for managing water by plans and methods to prevent pointless losses or to prevent flood waters or leaks.

It is imperative to prepare advance measures and tools to serve this water policy: fixed or mobile large and small water pumps, waterwheels, irrigation scoops, and water-bucket devices of every type in the methods of people's war.

c. The issue of working the land one time and two times:

The land to be worked once and worked twice must be more clearly measured with the Zone and the Sector parties being clearly responsible for giving specific instructions to and monitoring the Zone, Sector, district, or cooperative cadres.

As for the land to be worked once and twice, this must be mastered in lively activity lines. If the land cannot be gathered into a single strip, it must be gathered in scattered places making allowances for our problems for in creating and mastering the preconditions in terms of water. It is imperative to continue working the dry season rice crop. We push the early season crop with all our potential by going on strategic offensives, and we push the rainy season rice crop and then add some land in situations where the early and rainy season crops were not very good for some reason. Along with this, we must seize the opportunity to work a late season crop so that can be added in too.

All of this is for the objective of attacking and completely achieving three tons and six tons per hectare or surpassing that, and is not just for doing helter-skelter everywhere all the time without reaching three tons and six tons.

As for broadcast rice, reserve some in the cooperatives specifically for mastering rice production, but don't allow this to go in the wrong direction and negatively impact three tons and six tons. We take these lively activity lines so that we:

- Have strategic mastery over three tons and six tons
- Have full mastery over the livelihood of the people too
- Achieve the objectives of building and defending the country well and to the maximum

d. Regarding the manpower of the people:

It is imperative to concentrate on caring for and guaranteeing the manpower of the people from now until the end of the year by implementing to the maximum their feeding, clothing, medicine, sanitation, shelter, and rest following the regimes and principles of the Party, especially in terms of food and water. In tandem with this, take the time to rest every ten days or set aside one or two additional days each month to educate and whip-up the masses politically, ideologically, and organizationally so that they we always be clear-sighted and they will know about the enemy situation and know about the missions that must be done on each battlefield and spearhead. By doing this, they will transform into a seething force to push. If we do not do this, much of the manpower of the people will certainly be buried and lost, and certainly some forces will

be pulled back-and-forth and be paralyzed and slow in fulfilling both their building mission and their mission to attack the enemy.

e. Regarding the working power of animals and various agricultural tools:

Our Party appeals to the entire Party, the entire Army, and the entire people to regard their working animals as their closest comrades in arms that live and die together with them in building socialism and in the work of defending the country. Our country is still a backward agricultural country. Cattle and water buffaloes are a major labor force. Therefore, we must look after this force of cattle and water buffaloes really meticulously in terms of grass, fodder, water, fire and smoke to drive away mosquitoes, corrals, and so on, by assigning Party cadres to be responsible.

As for agricultural implements, they must be constantly maintained, conserved, and strengthened and expanded according to plans and methods.

f. Other issues:

It is imperative to concentrate on the other issues related to three tons and six tons, for instance the issue of the seed that must be always mastered, the issue of fertilizer, the issue of maintenance, various techniques of deep plowing and light plowing, fine harrowing, flat land, seeding and pulling of seedlings at the designated time, irrigation, transplanting densely or far apart according to the state of the soil and rice variety, fertilizer and agricultural chemicals to kill insects, weeding, and so on.

Managing all these processes well requires that the command committees have plans and clear programs in hand and clearly manage the manpower at every spearhead in accordance with each task and that the responsible persons be meticulous and the command committees themselves have programs to go down close to assist the base areas by making corrections, drawing experiences, and pushing in a timely manner. As for locations that are already strong, they must push to be stronger. As for locations that are still weak, they must concentrate on frequently going down close to help sort out problems in a timely manner and not let things slide and develop in their normal way.

4. Party-building in the cooperatives during 1977

On this issue, the Party has made the following decisions:

a. It is imperative to clearly distinguish the elements in the cooperatives and to not allow any further confusion:

- Full-rights members of the cooperative
- Candidate members of the cooperative
- Depositee members of the cooperatives

Only by making these distinctions can political views be clear. By so doing, organizational views will be clear; the view of managing forces and gathering forces will be clear; who can be relied upon, who we can be in solidarity with, and who can be attracted away will be clear. Then selection of the cooperative committees will follow the Party's organizational line and class line.

b. As for expanding new Party membership or new core organization membership in the cooperatives in late 1977, our Party has set the following direction:

- We must build three Party members per every 100 families. Every 100 families must have five core organization members. Every 100 families must have eight progressive persons. 1,000 families must have 30 Party members, 50 core organization members, and 80 progressive persons.

- However, in expanding Party membership and core organization membership there must be meticulous selection following the stipulations of the Party (Chapter 1, Article 1 of the Party Statutes) When it is not yet clear, do not go ahead and make the decision to induct. The decisive factors in selection to expand new Party and core organization membership are the Party Center and the Zone Committees. When both these echelons go down close to the base areas in person along with the other echelons, for instance the Sectors and the districts, selection is certain to be good and selection will be fast in accordance with the Party's objectives. We must do this work and regard this work as one of our core works because it is political work, leadership work, the work of attacking and eradicating the enemy and defending the country. It is concrete class struggle work, and it is direct personal contact work and building socialism in every field.

*

*

*

INSTRUCTIONS:

1. Every base area and every unit must organize the study of this document.

2. It is imperative to organize that study primarily collectively; then there must be additional study by group or individually.



This photograph: Our revolutionary workers in thread factory in Phnom Penh operating machinery to spool thread in the highest spirit of responsibility.



REVOLUTIONARY FLAG