

Building A

Building B

Building E

Building C

Building D



1. Tuol Sleng Museum of Genocide

Annex 1 Tuol Sleng
27 February 2008



2. Kaing Guek Eav alias Duch

Annex 1 Tuol Sleng
27 February 2008



3. Chum Mey

Annex 1 Tuol Sleng
27 February 2008



4. Bou Meng

Annex 1 Tuol Sleng
27 February 2008



5. Van Nat

Annex 1 Tuol Sleng
27 February 2008



6. Mam Nai

Annex 1 Tuol Sleng
27 February 2008



7. Suos Thy

Annex 1 Tuol Sleng
27 February 2008



8. Him Huy

Annex 1 Tuol Sleng
27 February 2008



9. Saom Met

Annex 1 Tuol Sleng
27 February 2008



10. Prak Khan

Annex 1 Tuol Sleng
27 February 2008



11. Kung Phai

Annex 1 Tuol Sleng
27 February 2008



12. Beginning of the reconstruction

Annex 1 Tuol Sleng
27 February 2008



13. Tuol Sleng entrance Gate

Annex 1 Tuol Sleng
27 February 2008



14. Entrance of Building E

Annex 1 Tuol Sleng
27 February 2008



**15. Building E, room where
registrations took place**

Annex 1 Tuol Sleng
27 February 2008



16. Measuring device (seated)

Annex 1 Tuol Sleng
27 February 2008



17. Measuring device (standing)

Annex 1 Tuol Sleng
27 February 2008



18. Measure of a prisoner

Annex 1 Tuol Sleng
27 February 2008



19. Identification tags

Annex 1 Tuol Sleng
27 February 2008



20. Photographs room (Building E)

Annex 1 Tuol Sleng
27 February 2008



21. Photographs presenting different backgrounds

Annex 1 Tuol Sleng
27 February 2008



22. Numerotation of detainees

Annex 1 Tuol Sleng
27 February 2008



23. Photograph of Bou Meng's wife

Annex 1 Tuol Sleng
27 February 2008



24. Painters room (Building E)

Annex 1 Tuol Sleng
27 February 2008



25. The events in Battambang

Annex 1 Tuol Sleng
27 February 2008

Observation
window



**26. Window through which Him Huy
observed (Building E)**

Annex 1 Tuol Sleng
27 February 2008



27. Crossbeam

Annex 1 Tuol Sleng
27 February 2008



28. Torture scene described by Van Nat

Annex 1 Tuol Sleng
27 February 2008



29. Graves

Annex 1 Tuol Sleng
27 February 2008



30. Chum Mey describes torture scenes

Annex 1 Tuol Sleng
27 February 2008



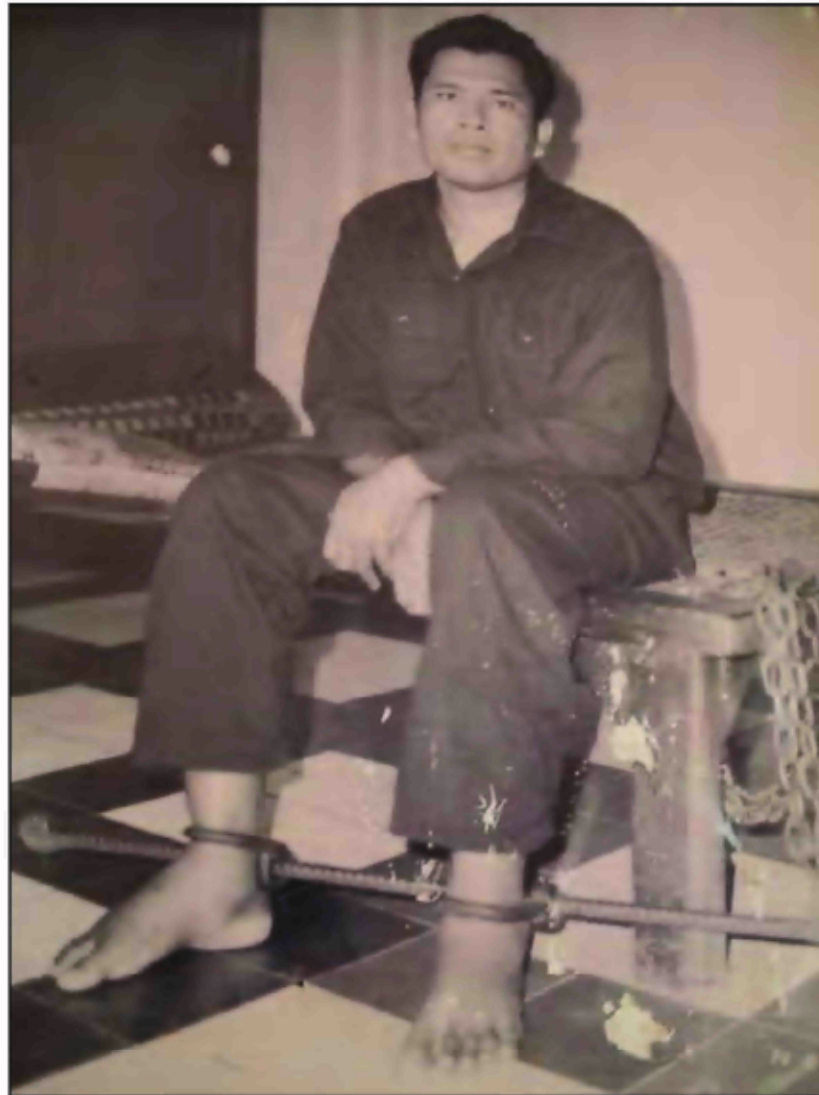
**31. Duch comments on a photograph of
Khmer Rouge cadres**

Annex 1 Tuol Sleng
27 February 2008



31 bis. Photograph of Khmer Rouge cadres

Annex 1 Tuol Sleng
27 February 2008



32. Photograph of Koy Thuon

Annex 1 Tuol Sleng
27 February 2008



34. Photograph of Hor

Annex 1 Tuol Sleng
27 February 2008



34. Body of a prisoner lying on the floor

Annex 1 Tuol Sleng
27 February 2008



35. The survivors of Tuol Sleng

Annex 1 Tuol Sleng
27 February 2008



36. Painting by Van Nat

Annex 1 Tuol Sleng
27 February 2008



37. Painting by Van Nat

Annex 1 Tuol Sleng
27 February 2008



D48/2

38. Van Nat comments on his painting

Annex 1 Tuol Sleng
27 February 2008



39. Painting by Van Nat

Annex 1 Tuol Sleng
27 February 2008



40. Painting by Van Nat

Annex 1 Tuol Sleng
27 February 2008



41. Instruments of torture

Annex 1 Tuol Sleng
27 February 2008



42. Bath tub

Annex 1 Tuol Sleng
27 February 2008



43. Painting by Van Nat

Annex 1 Tuol Sleng
27 February 2008



**44. Painting by Van Nat
(prisoner having his nails pulled out)**

Annex 1 Tuol Sleng
27 February 2008



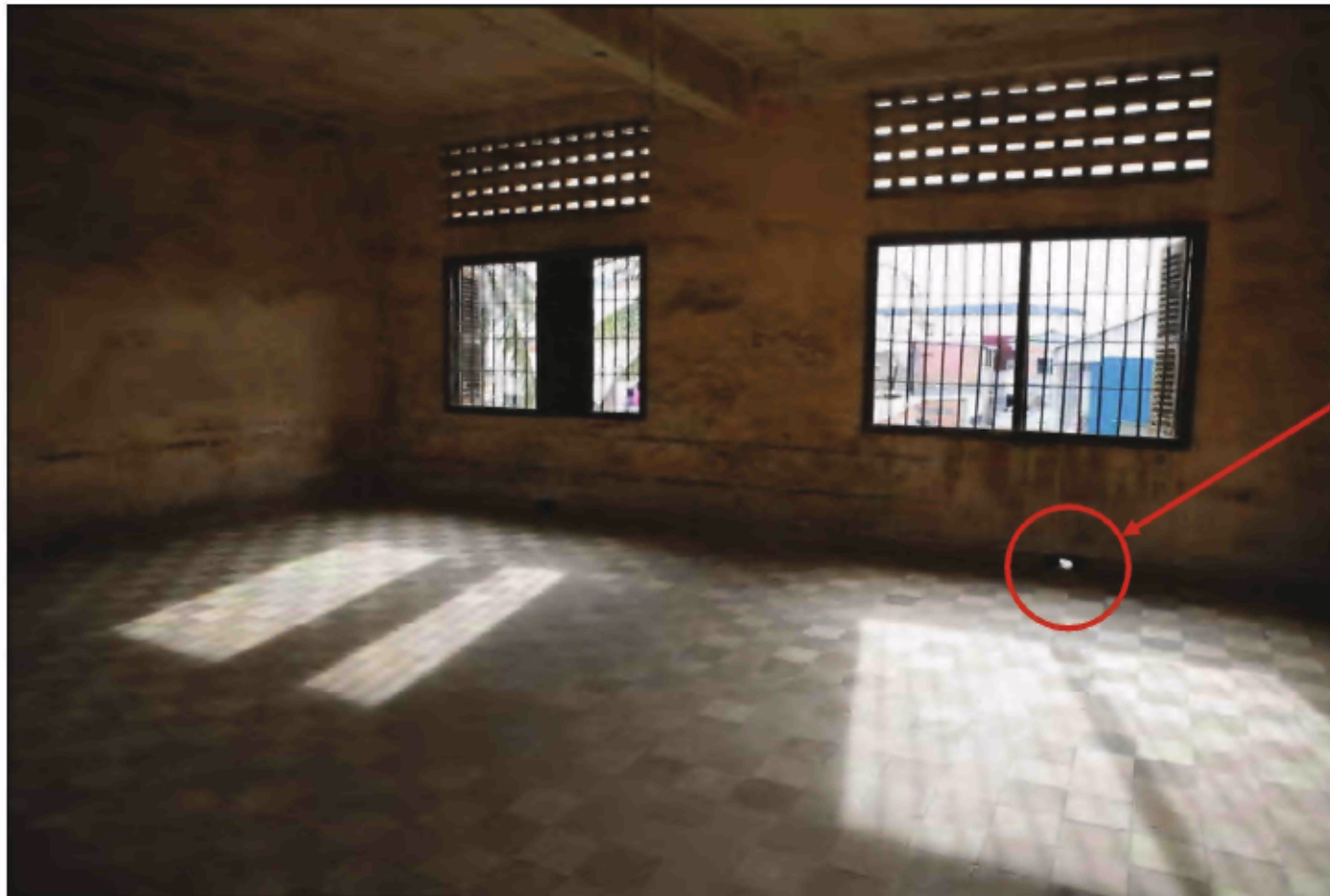
45. Chum Mey cell

Annex 1 Tuol Sleng
27 February 2008



46. Chum Mey explains the conditions of detention

Annex 1 Tuol Sleng
27 February 2008



Hole for the
evacuation of
water

47. Bou Meng and Van Nat detention room

Annex 1 Tuol Sleng
27 February 2008

Location of
detainee Bou Meng



48. Location of detainee Bou Meng

Annex 1 Tuol Sleng
27 February 2008



**49. Ammunition box and can for
prisoners to defecate and urinate in**

Annex 1 Tuol Sleng
27 February 2008



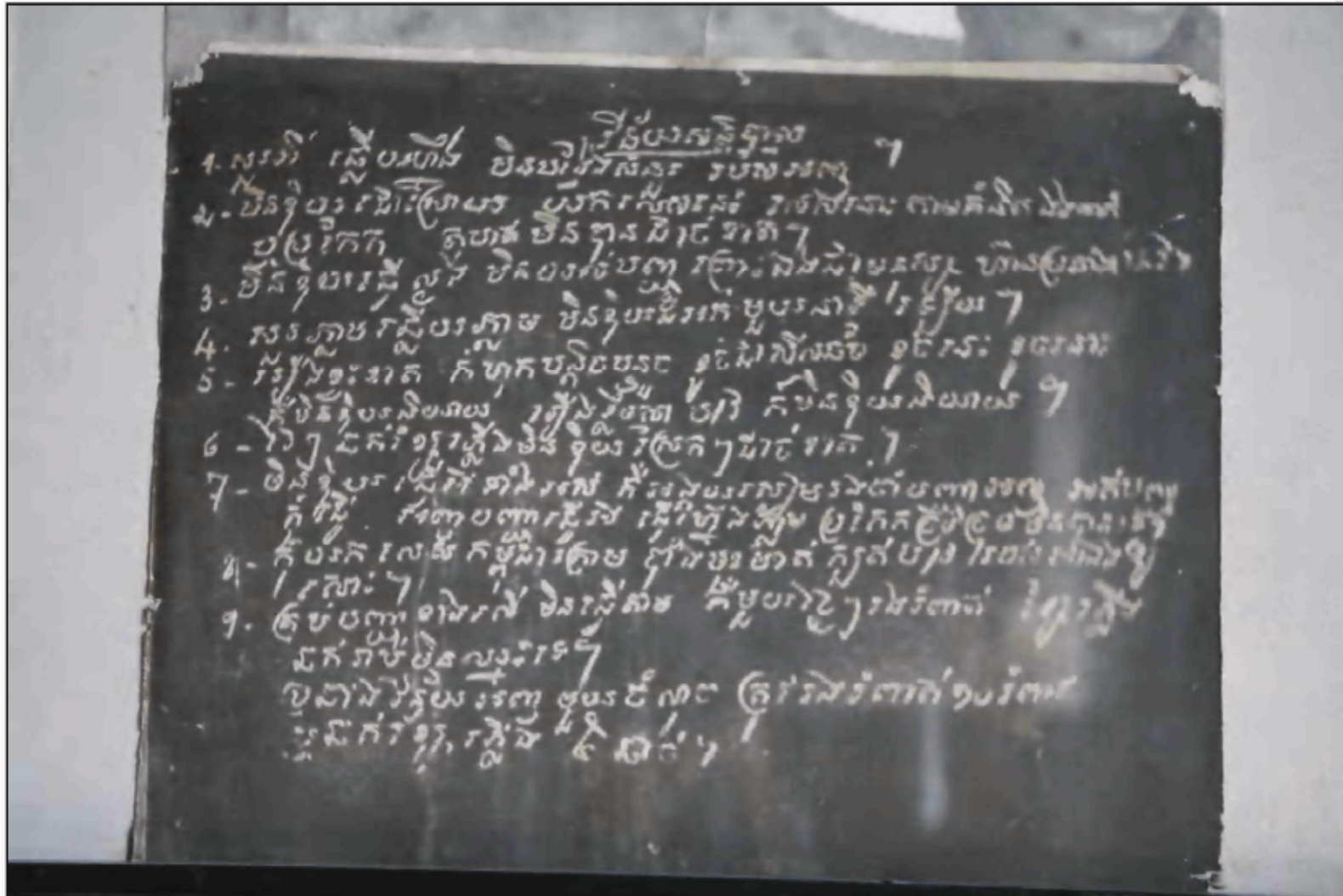
50. Gathering before Building C

Annex 1 Tuol Sleng
27 February 2008



51. Location for the removing of blood

Annex 1 Tuol Sleng
27 February 2008



52. S-21 « Internal rule »

Annex 1 Tuol Sleng
27 February 2008